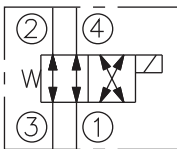
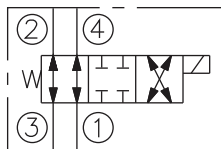


USASI/ISO:



Transition:



Overview of Components :

This valve can be used to convert your auger's manual valve to an electronically actuated valve, so it can be controlled with a FreeFlo wireless remote.

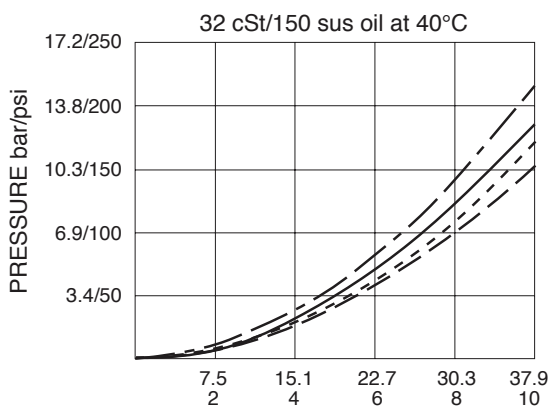
1. Plumb this valve into your existing hydraulic system by referencing the diagrams.
2. Ports 4 and 1 are for the supply side of the system and ports 3 and 2 to the motor on the auger.
3. The solenoid has two wires for power supply and ground which are interchangeable. Connect one wire to the output wire of the FreeFlo wireless remote receiver and the other wire to a system ground.
Note: Refer to your FreeFlo wireless remote unit instructions to determine the appropriate color of output wire for your system.
4. Once the valve is installed, check the rotation of the auger. If the auger is rotating backwards, switch the hoses between ports 2 and 3 or switch the hoses on the motor.
5. When de-energized, the valve allows flow from ③ to ②, as well as from ④ to ①. When energized, the cartridge's spool shifts to open ③ to ④, and ② to ①. All ports are closed at crossover.

Ratings:

Operation Pressure: 207 bar (3000 psi)

Flow: 37.9 lpm (10 gpm) max

Ecoil: 1.7 amps at 12 VDC



THINK SAFETY

Proper application, installation, and operation of any machine and/or installation incorporating products sold by Lundell Plastics Corporation™ is the responsibility of the purchaser and/or end user. All local, state, and federal safety codes must be followed. Lundell Plastics Corporation™ is specifically not responsible for property damage and/or personal injury, direct or indirect, for damages and/or failures caused by improper design, application, installation, operation, abuse, and/or misuse of its' products. Conveyors must never be installed, readied for operation, or operated without proper covers and guards installed and securely in place. Illustrations and photographs on this website and within the product catalogs are shown without covers and guards for clarity of illustration only, and are not intended to show proper installation.

Never operate this hydraulic valve above its rated pressure or flow rate. Ensure that system relief valves are set to the level of the lowest rated component in the system. Never check for oil leaks with your hands as high pressure oil leaks can be dangerous.

Visit us online at www.lundellplastics.com to see other innovative products!